

SEGA 2019 Rules

WHEELS

NOT Accepted Wheels:



Accepted Wheels



WHEELIE BARS

(Wheelie bar wheels must be under bottom plate not behind it.) Bottom bar must not be round tubing. If you run springs they must be on the housing end, not the wheel end. No X or V bar between wheelie bars allowed. Wheels must be minimum 16" apart. No long wheelie bars. Maximum length if hooked to the housing is 44" in. from the center of the housing to the center of the bolt. If wheelie bars are hooked to the body, the diameter of the wheel plus 2" in. is allowed to hang behind the bumper or push bar.

Accepted Wheelie Bars:



NOT Accepted Wheelie Bars:



Rear End Housings

Rear end must NOT be fabricated or appear fabricated

Accepted



Not Accepted



SHIFTER HANDLES

3 Accepted Shifter Handles



Transmission Not Included

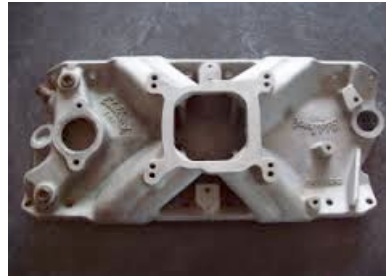


NOT ACCEPTED



INTAKE STYLES

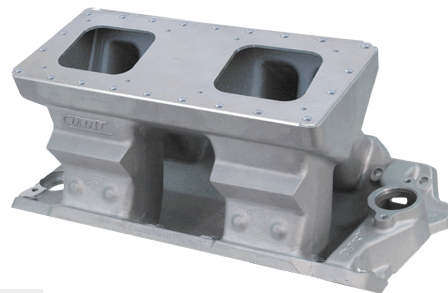
Accepted Intakes receiving the 50lb weight break



Accepted Intakes that DO NOT receiving the weight break and also require a 50lb added penalty.



NOT Accepted Intakes



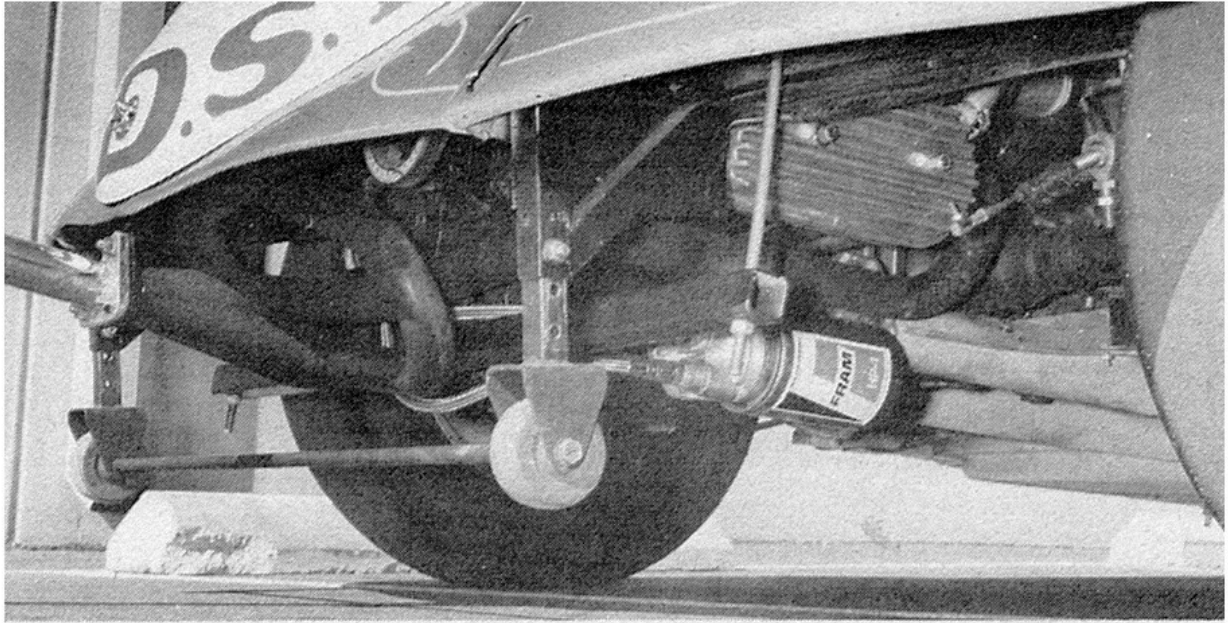
These are the accepted Aftermarket shifters and wheels for Volkswagen H/Gas cars. No others are allowed without pre-approval. Do not spend your hard earned money on anything that is not shown here until you have our approval.

Pre approved VW shifters



Pre Approved VW Wheels





VW solid mount to bumper bracket.

VW style bars mounted to axle tube spring plate flange

